

Experienced saxophonists learn to tune their vocal tracts

Jer Ming Chen¹, John Smith¹ and Joe Wolfe^{1*}

Science, Feb. 8, 2008; **319**: p 726

How much do the acoustics of the vocal tract influence performance on single reed instruments (clarinets and saxophones)? To summarize a twenty-five year debate, scientists' opinions have ranged from 'negligible' (1) to 'vocal tract resonant frequencies must match the frequency of the required notes' (2). Musicians' opinions are also diverse. The longevity of the debate is due to the difficulty of making non-perturbing, precise, acoustical measurements inside the mouth during playing (3): i.e. in a variable, humid environment with very high sound levels.

The notes played on wind instruments depend on the acoustic impedance Z : the ratio of sound pressure to the oscillatory component of air flow. Reed instruments usually play at frequencies very near a high, sharp peak in the impedance spectrum of the bore of the instrument. In a standard, simple model (4), the impedance of the vocal tract Z_t is in series with that of the bore Z_b . For most playing conditions $Z_b \gg Z_t$ (e.g. Fig 1A), so acousticians usually neglect the role of the tract.

In saxophones and clarinets, a single reed vibrates to modulate the flow into the instrument, and is in turn driven to vibrate by standing waves in the bore of the instrument. We studied the tenor saxophone, whose mouthpiece is large enough to support devices we constructed for measuring Z_t with minimal perturbation to the player. Five professional and three amateur saxophonists sustained notes for several seconds while we measured Z_t using an acoustic signal comprising 224 sine waves (5, 6 and supporting material).

In Fig 1, (A) and (B) show examples. The dark line is Z_t . Upon this are superimposed narrow spikes, which are harmonics of the note being played. The pale line shows Z_b for that note.

Over the lower range of the instrument, the peaks in Z_b are much greater than those in Z_t . In this range, the peaks in Z_t varied greatly among players, and showed no consistent relation to the note played (Fig 1A and 1C). In the high ("altissimo") range, however, the professional players consistently tuned a strong peak in Z_t near to or slightly above the fundamental of the note played (Fig 1C).

The amateur players, who did not tune a strong peak in Z_t , were unable to play in the altissimo range. A configuration of keys pressed (a fingering) produces a Z_b with several peaks, whose magnitudes decrease at high frequency. In the normal range, the peak of Z_b at the appropriate frequency is large and dominates the series combination ($Z_b + Z_t$). In the high range, the relevant peak in Z_b is weak (Figs 1A and 1B are representative). Here, experienced players use a peak in Z_t , which may be several times greater than that in Z_b , to choose the playing frequency. For instance, experienced players can hold a single fingering and play a different note at each of the first dozen peaks in Z_b by tuning Z_t

We conclude that the vocal tract resonances have only modest effects on the sounding pitch over much of the instrument's range. However, to play notes in the altissimo range, players learn to tune a resonance of the tract near to the note to be played. Although demonstrated only for saxophone, similar effects are likely to be important in other single and double reed instruments, whose players also report the importance of the tract for special effects, including high register playing.

References and Notes

1. J. Backus, *J. Acoust. Soc. America* **78**, 17 (1985).
2. P.G. Clinch, G.J. Troup, L. Harris, *Acustica* **50**, 280 (1982).
3. C. Fritz, J. Wolfe, *J. Acoust. Soc. America* **118**, 3306 (2005).
4. A. Benade, in *Vocal Fold Physiology, Biomechanics, Acoustics, and Phonatory Control* (ed. I.R. Titze, R.C. Scherer), Denver Centre for the Performing Arts, 425 (1985).
5. J. Wolfe, J. Smith, J. Tann, N.H. Fletcher, *J. Sound and Vibration*, **243**, 127 (2001).
6. P. Dickens, J. Smith, J. Wolfe, *J. Acoust. Soc. America*, **121**, 1471 (2007).

We thank the Australian Research Council for support, the Yamaha Corporation (Iwata, Japan) for the saxophone and our subjects.

¹ School of Physics, University of New South Wales, Sydney 2052 Australia

* To whom correspondence should be addressed. E-mail: J.Wolfe@unsw.edu.au

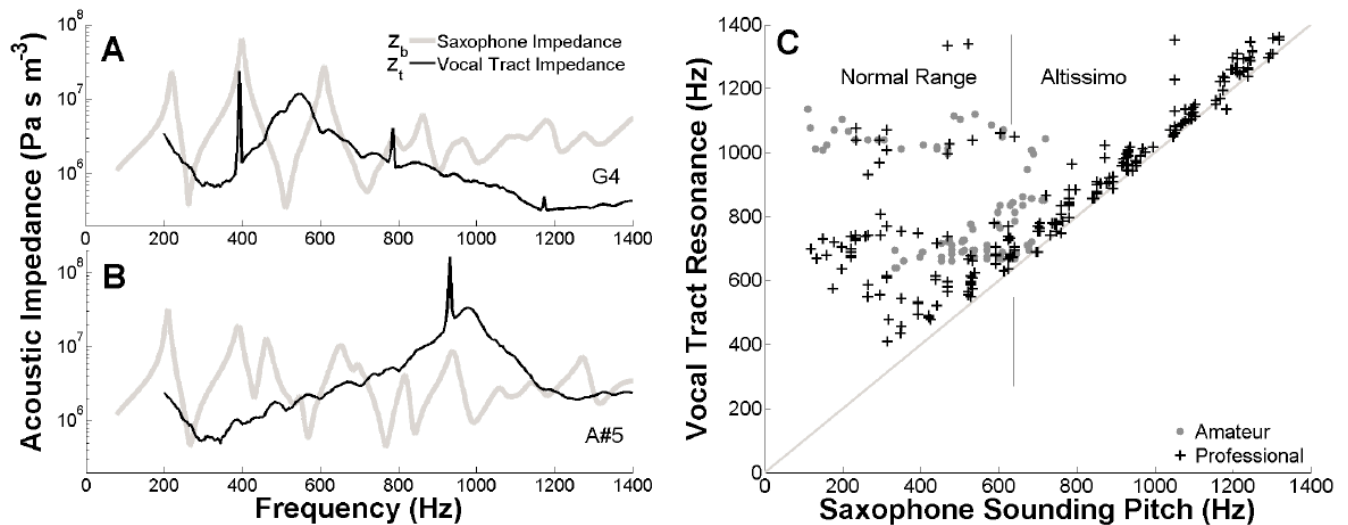


Fig. 1. Representative examples of acoustic impedances of the tract (Z_t) for a professional player (A) for the note G4 (near 400 Hz, in the normal range) and (B) for the note A#5 (near 940 Hz, altissimo range) (sound files in supporting material). The narrow peaks are harmonics of the notes played, the broad peaks are tract resonances. Z_b for the saxophone for each note is shown with a pale line. In (C), the frequencies of the relevant resonance in the vocal tract are plotted against the frequency of the note played. A line indicates the equation tract resonance frequency equals pitch frequency.

Supporting material (to be published by *Science* on line)

Two different methods were used to measure Z_t (see (1) for a review of methods). For all notes except those in the lowest register of the saxophone, a capillary method (adapted from (2, 3)) was used, as shown in Fig 2. The signal was an acoustic current comprising 224 frequencies between 200 and 1400 Hz, spaced at 5.383 Hz. The impedance head was calibrated using an acoustically infinite waveguide.

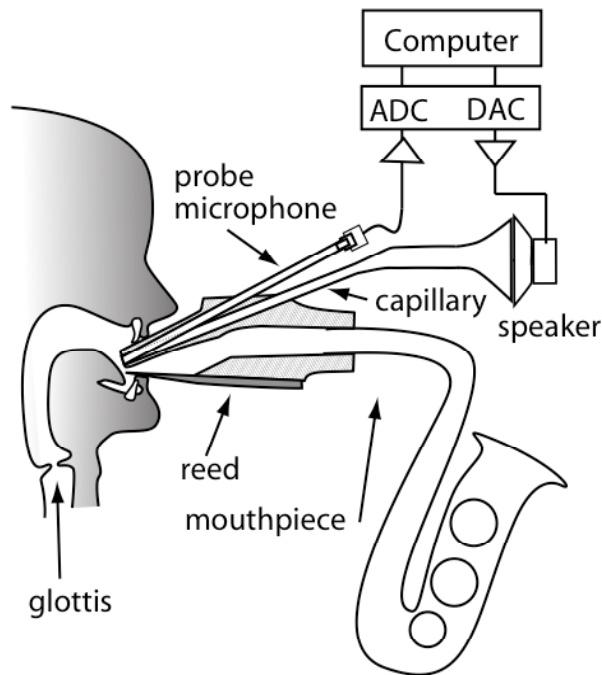


Fig. S1. An acoustic current source injects a sound comprising a broad range of frequencies directly into the vocal tract of the player (not to scale). A probe microphone (Brüel & Kjaer 4944A) measures the response of the tract to this acoustic current, and also the harmonics of the note being played. The capillary, which is the output of the current source, and the probe of the microphone are both laid in a channel cut into the top of the mouthpiece. (For the multiple microphone method, the waveguide is likewise set into the top of a mouthpiece.) Thus the capillary and probe (or the waveguide) are always acoustically connected to the mouth and are never occluded by the reed, even when the reed completely closes the mouthpiece (called the 'beating reed' condition).

For low notes (in the saxophone's first register), the flow of air in the mouth produced a broad band signal that reduced the signal:noise ratio of measurements, so the multiple microphone method (1) was used. This method was also used to measure the impedance spectra Z_b of the saxophone.

The measurement head for the multiple microphone method had an acoustical impedance of $6 \text{ MPa}\cdot\text{s}\cdot\text{m}^{-3}$. While this was large compared to the peaks in Z_t for low notes, it was not large compared to those in Z_t for high notes. Although the impedance of the head itself does not perturb the measurements, a low value does perturb the players for high notes, because it is in parallel with Z_t . Consequently, the capillary method was used for the medium and high range of the saxophone (second register and above).

The strong peaks in Z_t that we observe in professional players are consistent with a small glottal opening, although this was not confirmed because players are generally unaware of the state of the glottis. A small glottal opening was observed in very experienced wind players by Mukai (4) using laryngoscopy.

Players of the didjeridu often produce strong peaks in Z_t in the range 1-2 kHz, where they may exceed Z_b for high frequencies. Consequently, they strongly modify the amplitude of some of the high harmonics and thus the timbre (3). That the vocal tract also has (less spectacular) effects on the timbre of other wind instruments is known to both players and some composers (e.g. 5). However, we know of no previous study that shows a strong dependence of the note played on the vocal tract configuration.

1. P. Dickens, J. Smith, J. Wolfe, *J. Acoust. Soc. America*, **121**, 1471 (2007).
2. J. Wolfe, J. Smith, J. Tann, N.H. Fletcher, *J. Sound and Vibration*, **243**, 127 (2001).
3. A. Tarnopolsky, N. Fletcher, L. Hollenberg, B. Lange, J. Smith, J. Wolfe, *J. Acoust. Soc. America* **119**, 1194 (2006).
4. M. S. Mukai, in Proc. International Symposium on Musical Acoustics, Tokyo, Japan, pp. 239 (1992).
5. Berio, L. "Sequenza V; Solo Trombone" Universal, NY (1966).

Sound files

A professional plays G4 and A#5 (written as A5 and C7 for the tenor saxophone). These are the notes used for Figs 1A and 1B in the paper.

[profG4Ax5.wav] [profG4Ax5.mp3]

An amateur plays G4 correctly. He then plays with the fingering for A#5. Because he does not tune the vocal tract resonance to A#5, the instrument plays at its strongest impedance peak, near 200 Hz, which is about G#3.

[amG4Ax5.wav] [amG4Ax5.mp3]

A professional plays comfortably over the normal range (below about F5) and altissimo range of the tenor saxophone. The two passages cover the range D#3 to A#5 (written F4 to C7) and F3 to G5 (written G4 and A6).

[profsample.wav] [profsample.mp3]

An amateur begins a scale at A#4 (written C6) near the top of the normal range. From F5 (written G6), he fingers the appropriate keys. However, without appropriate vocal tract tuning, the instrument plays at one of the lower impedance peaks.

[amscale.wav] [amscale.mp3]

One sentence abstract.

To play the high range of the saxophone, players must learn to tune a strong resonance of their vocal tract to the desired note.

100 word abstract.

Acousticians have long debated whether and how the resonances of the vocal tract are involved in the playing of clarinet and saxophone. We measured the resonances of saxophonists' vocal tracts directly, while they played. Over most of the instrument's range, there is no simple relation between tract resonances and the note played, and the tract resonances varied among players. In the high (altissimo) range, a strong resonance of the tracts of professional saxophonists was systematically tuned slightly above the desired note. Amateurs, who did not tune a strong resonance, were unable to play notes in the altissimo range.